

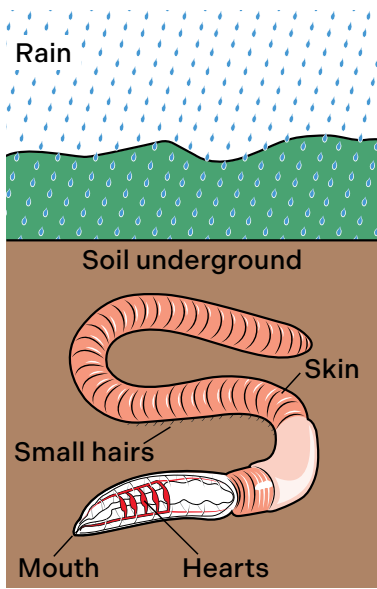
Name: _____

Date: _____

Lesson 4 Module 3

END-OF-MODULE ASSESSMENT

1. Observe the diagram. Read the chart.



Structure	Function
Skin	Contains receptors for light, touch, and vibrations
Mouth	Takes in food
Hearts	Pump blood to the head
Small hairs	Grip the soil to help the worm move forward

Circle the structure earthworms **most likely** use to sense raindrops hitting the ground.

- **Skin**
- **Mouth**
- **Hearts**
- **Small hairs**